



HEATHSIDE COURT

TADWORTH

www.michael-everett.co.uk

5 HEATHSIDE COURT

TADWORTH, KT20 5RY

A very well presented ground floor apartment in a popular retirement development located on the edge of Walton Heath.

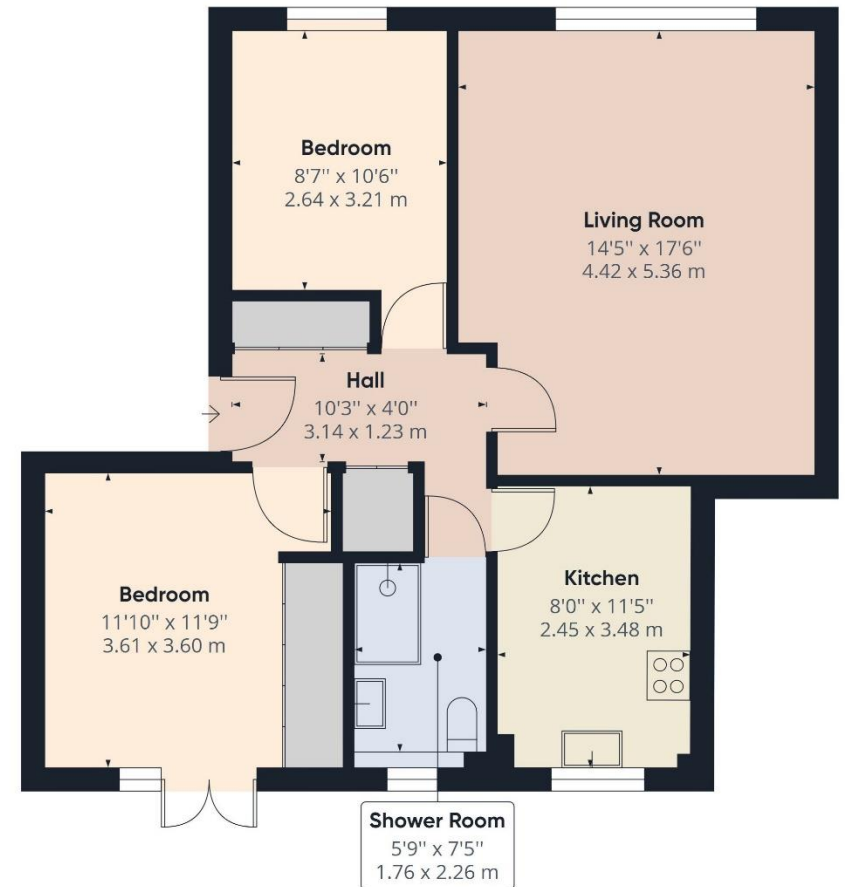
The property, featuring a large living room, a re-fitted kitchen, two bedrooms, a re-fitted shower room and comes with the benefit of double glazing throughout, a garage and an extended lease. Outside, there are areas of very well maintained gardens together with resident and customer parking and a residents day lounge with a house manager.

Heathside Court, is set midway between Walton on the Hill and Tadworth villages, both offering a range of local shops and services. Tadworth Station is approximately half a mile away whilst bus services to Epsom, Reigate & Redhill stop immediately outside the development.

ASKING PRICE: **£289,950**

701.27 FT² 65.15M²

EPC RATING: D COUNCIL TAX BAND: E



WALTON ON THE HILL 61 Walton Street, Walton-on-the-Hill, Surrey KT20 7RZ
01737 814877